



Greater Toledo

**Community  
Foundation**

**Annual Report 2024**

**Stronger  
Together.  
Building  
Forever.**

## Our Mission

Greater Toledo Community Foundation is a public, charitable foundation which exists to improve the quality of life in the region.

Providing a flexible, informed, effective means for donors to achieve their charitable goals in perpetuity.

Addressing the changing needs of the region through efficient, prudent, high impact grantmaking.

Serving as a source of information about and as a catalyst in shaping the region's response to those needs.

Facilitating the work of other grantmaking organizations in order to achieve effective and efficient grantmaking practices.



Share your feedback on the new Annual Report format.

Dear Friends,

As we reflect on the past year, we are humbled and inspired by the incredible generosity and shared spirit that continues to define our region. Together, we have once again proven that when we join forces, we have the power to create lasting change — change that strengthens our communities, supports our neighbors and makes this region a truly great place to live.

In 2024, we witnessed firsthand the profound impact of collective action. Whether it was through a transformative donation, the \$464 million contributed to local nonprofits across our region or a local business empowering their employees to give back, each act of giving was a building block toward a brighter future. We've seen how the power of engagement — the discussions that spark new ideas, challenge our thinking and motivate action — are critical to moving us forward. It is through these conversations and collective efforts that we find solutions to the complex challenges we face.

The strength of our region is in its people. Our work is not possible without the steadfast support of donors, volunteers, organizations and community leaders like you. You are the heartbeat of our efforts, and we are endlessly grateful for your commitment.

As we look ahead, we know that the future is bright, and with your continued generosity and support, there is no limit to what we can accomplish together.

Thank you for your belief in the power of partnership and for helping transform our community.

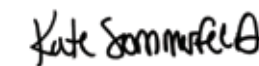
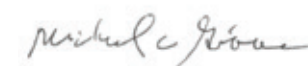
With gratitude,



**Kate Sommerfeld**  
President/CEO



**Mike Gibbons**  
Board Chair

## A Message About Our New Annual Report Format

You may have noticed a reduction in page count from previous years.

By developing a more concise annual report, our hope is to effectively communicate our impact and efficiently drive more dollars to our community partners.

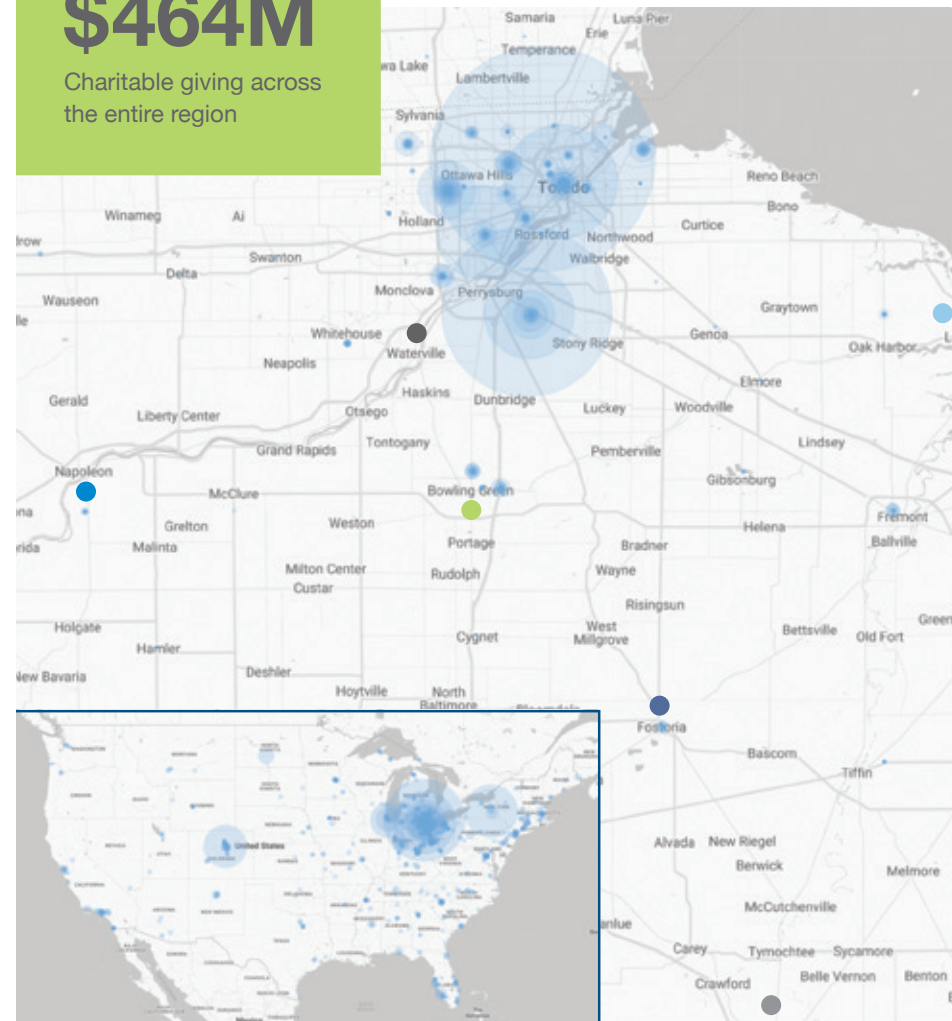
Please share your feedback as we continue to evolve our communications.

# Celebrating Our Collective Generosity

Our community has shown incredible heart and commitment through a collective \$464M in charitable giving across our region. This remarkable display of generosity strengthens us all and touches countless lives. We're deeply proud to be part of a community where giving back is woven into our shared values.

**\$464M**

Charitable giving across the entire region



Our grantmaking demonstrates a strong commitment to our region, with the majority of funds staying here, strengthening local communities. Our impact extends far beyond these borders, supporting meaningful initiatives nationally and beyond.

## Our Affiliates

- Bowling Green Community Foundation

---

- Greater Fostoria Community Foundation

---

- Henry County Community Foundation

---

- Ottawa County Community Foundation

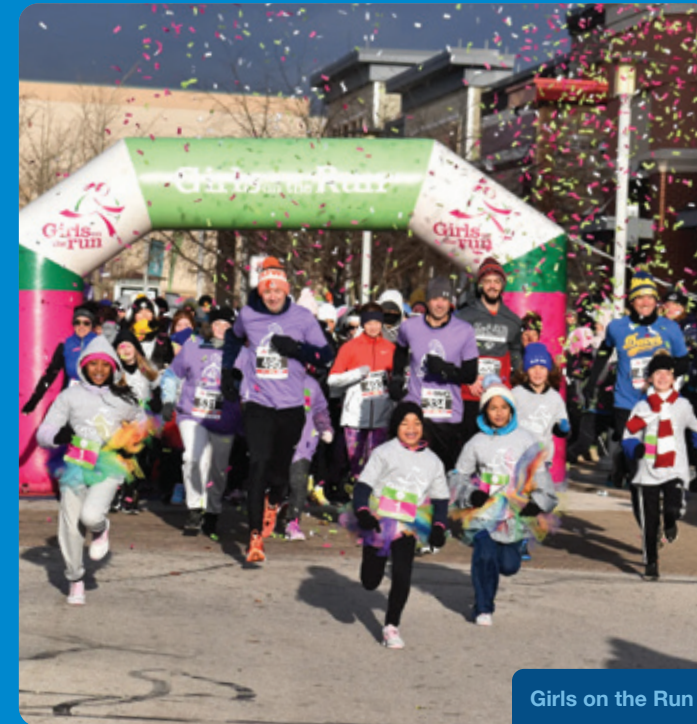
---

- Waterville Community Foundation

---

- Wyandot County Community Foundation

# Foundation Focus



Girls on the Run



## A Record-Breaking Year

In 2024, the Community Foundation shattered records by distributing an unprecedented \$24 million in grants while simultaneously raising \$28.7 million from generous partners, marking the most impactful year of giving and fundraising since our founding in 1973.

This remarkable dual achievement reflects both our community's extraordinary generosity and the Community Foundation's growing ability to address critical needs across our region. You can find more details on page 16.

## Creative Philanthropy

Collaboration is at the heart of the Community Foundation.

The Toledo Neighborhoods Fund grants out dollars to local communities surrounding the Overland Solar Array through the generation of solar energy. The sale of this energy goes into an endowed fund and residents help decide where money is invested. \$75,000 was granted out in 2024 to six nonprofit partners.

Additionally, the Community Foundation was awarded \$1M to work with other partners to expand the impact through educational programming and career development. Read more on page 7.

# Foundation Focus



## New President & CEO

The Community Foundation welcomed Kate Sommerfeld as its new President and CEO in August 2024. Kate has brought nonprofit leadership experience and a collaborative community approach to the organization.

This significant change marked the conclusion of Keith Burwell's impactful 20-year tenure and represents an exciting new chapter in the Foundation's commitment to community.



## Partnerships in Philanthropy

The Community Foundation formed strategic partnerships with a number of new corporations and foundations.

One example was the SSOE Foundation, a donor advised growth fund that will streamline and enhance SSOE's charitable giving. This collaboration will allow SSOE to efficiently distribute resources to communities where their offices are located, maximizing philanthropic impact through the Community Foundation's existing infrastructure.



## Strengthening the Nonprofit Sector

The Community Foundation works to support and strengthen our nonprofits through grantmaking, capacity building, and the Center for Nonprofit Resources.

We partnered with 20 nonprofit employees that graduated from the Minority Executive Leadership and Nonprofit Management programs, enhancing nonprofit expertise, strengthening both their resume and organizational impact.

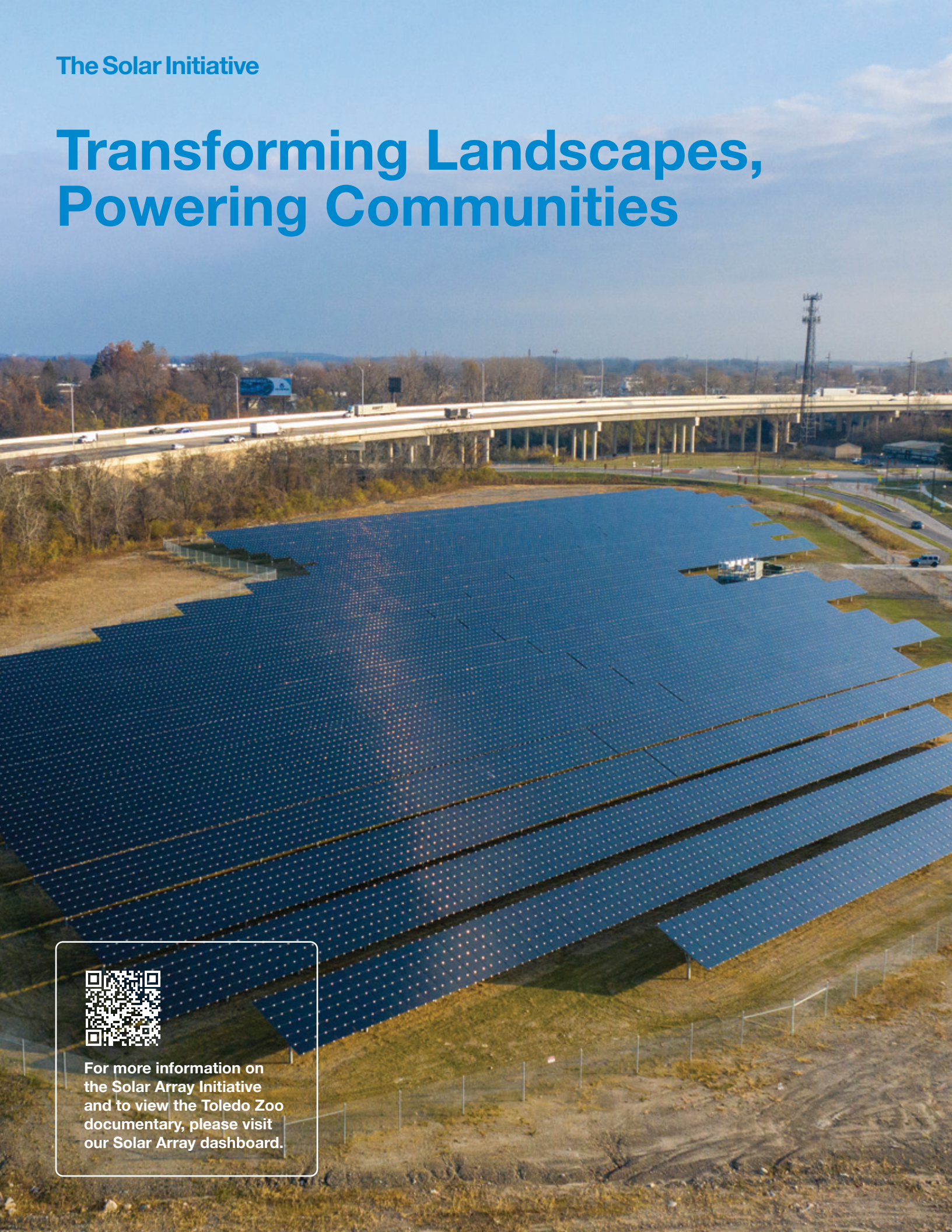


## Areas of Impact: Mental Health and Eldercare

The Mental Health and Eldercare Funds, both established in 2024, provide sustainable resources for evolving community needs in mental health and senior care.

These funds allow donors who are passionate about specific issues to make catalytic contributions to address current needs while adapting to future challenges.

# Transforming Landscapes, Powering Communities



For more information on the Solar Array Initiative and to view the Toledo Zoo documentary, please visit our Solar Array dashboard.

For nearly a century, the 80-acre site at Overland Park hummed with the sound of the iconic Jeep plant, a cornerstone of Toledo’s manufacturing identity. When operations shifted to a new Chrysler assembly plant in 2006, the land fell silent.

That silence has been replaced by the quiet productivity of 21,000 solar panels. This 2.5-megawatt solar array now generates clean, renewable energy for Dana Incorporated’s adjacent 300,000 square foot axle assembly operation—creating a perfect circle of local energy production and consumption.

The solar project stands as one of the largest business, government, and community collaborations in northwest Ohio’s history. Construction began in September 2019, with solar modules provided by First Solar, Inc. The Port Authority provided the property to establish the array. By August 2020, both the North and South Sites were operational, thanks to GEM Energy, JDRM Engineering, Mannik Smith Group, and TTL Associates.

But the solar project also functions as a community investment vehicle. Revenue from energy sales to Dana flows back into the Community Foundation, reinvesting these funds directly into the surrounding neighborhoods as grants. Residents sit on the Toledo Neighborhood Foundation grant committee, steering priorities to the needs of the community first.

In 2022, the industrial landscape transformed again as student-created sculptures from the Toledo School for the Arts (TSA) were installed. TSA students attend classes in a downtown building that once housed a Willys Overland domestic car manufacturing plant, the same company that pioneered Jeep production.

In 2024, the initiative’s impact expanded through a Department of Energy grant that enabled seven local nonprofit partners to educate youth about solar energy and workforce development. \$979,000 has gone back into the community through this initiative that includes:

- The Toledo Zoo planted a prairie around the solar array and produced a documentary about the project
- Imagination Station hosted free Family Science Nights for area students and their families
- Toledo Museum of Art partnered with First Solar to provide 8th graders field trips to learn about solar panel production
- Toledo Public Schools and Washington Local integrated solar education into their curricula

- Metroparks Toledo incorporated solar energy education into their Connections Camp programming
- Toledo School for Arts created sustainable educational initiatives, culminating in an event with renowned author Dr. Robin Wall Kimmerer at Imagination Station

Also in 2024, the Toledo Neighborhood Fund distributed its inaugural round of competitive grants totaling \$75,000 to six area nonprofits, funded entirely through the sale of solar energy to Dana. Recipients included Children’s Theatre Workshop, The Arts Commission, Girls on the Run Northwest Ohio, Toledo Day Nursery, Cherry Street Mission and Maumee Valley Habitat for Humanity.

The Overland Solar Initiative demonstrates how industrial sites can be reimaged as holistic community assets that generate multiple forms of value.



**Environmental value** through clean energy production and prairie installation on a floodway



**Educational value** through workforce development and youth engagement



**Economic value** through partnership with Dana and The Port Authority and the revitalization of Overland Industrial Park



**Cultural value** through art installations and community programming



By 2025, we’re projecting \$1.23M will be invested back into the community through this initiative.

# Roots of Giving

## Pariss M. Coleman II and Dr. Traci Watkins-Coleman

Born and raised in the heart of Toledo's Old West End, Pariss Coleman II learned a fundamental lesson early on that would shape his approach to life and giving, growing into a powerful force for community change: "To whom much is given, much will be required."

While attending The Ohio State University College of Law, Pariss met Traci Watkins, a student at The Ohio State University College of Medicine from Columbus. They were both raised with strong foundations in faith, education and the belief that true success is measured by what you give, not what you gain.

After graduation, the couple made a conscious decision to return to Toledo. For Pariss, it was a homecoming; for Traci, it was embracing a new community. Both saw it as an opportunity to build meaningful professional lives while making a difference in a place that needed passionate advocates.

"The law profession is built on meaningful relationships," Pariss said. Similarly, Traci approaches her medical practice as a direct extension of her desire to care for others. "As a physician, my job has always been to take care of people. Philanthropy can be an extension of that."

Their giving journey began by responding to donation cards, writing checks when asked. But as Pariss joined the Community Foundation's board of directors, their approach evolved. What had been occasional charitable giving transformed into strategic philanthropy, designed to create lasting impact.

"The benefits are significant," said Pariss. "It's easy to give, it's easy to grant out to the community, and the growth from investments helps the initial gift live on."

Traci's involvement on various nonprofit boards, including TAPA (The Toledo Alliance for the Performing Arts), deepened their shared awareness of community needs. "Giving locally helps the community you're living in," she emphasized. "A rising tide lifts all boats."

Pariss added, "When you give locally, you can actually see the fruits of your gifts and labor. It's inspiring to live here. You don't have to look hard to see giving happen. It's motivational."



**You go from just existing and living your life to being an engaged member of the community. You start looking at where the needs exist.**

For Traci, becoming a philanthropist fundamentally shifted her relationship with Toledo.



**For a full video version of this conversation, please visit our website here.**

One of their proudest examples of philanthropy came through their support of the Welcome Center at Lourdes University. After Pariss had served nine years on the university's board, the need to update this crucial gateway to education became apparent.

Looking toward the future, education remains at the heart of their philanthropic vision while also emphasizing the importance of bringing diverse voices to the table. In today's divided world, they see community-building as essential work.

Pariss and Traci highlight the support systems that led to their success. "Education and philanthropy started at home, with community focused parents. We saw generosity and helping people at home first. And then we saw the same thing at school and church, so philanthropy now is building on what we learned as children."

And now, through their fund at the Community Foundation, they are supporting the next generation of Toledo's leaders, philanthropists and innovators, rooted in the notion that we can do more if we do it together.

# DMC Gives Back



**No one is self-made. We are where we are today through God's blessing and the support of our families and community.**

Pat Sheehan

Since his first job as a paper boy, Pat Sheehan learned about giving back. Through their example, his parents taught him the responsibility of setting aside a portion of his pay for others. "They emphasized the idea of giving what you can. The amount wasn't important. It was all about participating." Elaine Sheehan had a similar on-ramp to philanthropy when she was awarded scholarships to attend college. "I made sure, when I was able, to pay back the college, and then some. I never forgot that."

When their granddaughter was diagnosed with cancer, they saw the community rally around their family, giving more meaning to their passion for inspiring further generosity. On a Make a Wish trip with their granddaughter, Pat read a book called, "Give Kids the World" that gave him the idea of expanding philanthropy at their IT business, DMC Technology Group. "I thought, 'We can do this. We can harness DMC and our team to make a real difference.' As a locally-owned business, we have made it a priority to give back to the local community we serve."

The program is called DMC Gives Back. It consists of two parts: treasure and service. When an employee donates 1% of his/her earnings to a local 501c3, DMC contributes \$4,000. This is managed by the Community Foundation. In addition, employees get three paid time off days a year to perform service work in the community.

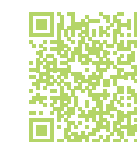
"The goal is simplicity," says Elaine. "Employees can choose their own service projects, but we also offer group opportunities."

Steven Kern, a DMC employee, has taken advantage of both the financial and PTO components of DMC Gives Back. He has struggled with mental health challenges, and through his wife, a social worker, became aware of The Cocoon, a women's domestic violence shelter. "I've struggled with PTSD, depression and anxiety. But I have so many people who are supporting me and helping me get better. I couldn't imagine being in a position where someone in my life was making it harder to heal. The barriers are bigger with victims of domestic violence."

Steven has used his PTO to volunteer at Habitat for Humanity, Camp Miakonda and The Cocoon. The Cocoon is Wood County's only comprehensive domestic and sexual violence advocacy agency which provides emergency safe shelter as well as community-based services to all survivors. Steven uses his skills in landscaping at The Cocoon to assist in creating a welcoming green space which includes a native prairie, an outdoor yoga and meditation space, walking trails and pergolas with benches, for those at the shelter.

"Having a beautiful green space should not feel like a luxury. It should be a part of the human experience, no matter who you are." Steven is passionate about raising awareness of domestic violence in the community, a pervasive issue that is easy to forget.

Pat and Elaine are passionate about creating a giving culture at DMC. Their future plans involve rallying around a 'transformational project' where all 30 employees can be involved in giving back together. Elaine is eager to share and learn from other companies that want to inspire philanthropy within their organizations. "Nothing about DMC is extraordinary when it comes to being able to do this. If we can make this happen, any company can."



**To learn more about how your company can start a give back program, reach out to our Philanthropic Service Advisors here.**



**For more information on The Cocoon, visit their website here.**

# Fund Types

The Foundation offers a number of fund options for you, your family, businesses and nonprofit organizations. The funds are flexible, and you decide how much or how little you want to be involved in making grants.



Leadership Toledo YIPEE students

## Community Fund

Support pressing community needs through Foundation-identified effective programs.

## Designated Fund

Provide permanent income for specific organizations important to you.

## Donor Advised Fund

Make recommendations on grants from your fund, with Foundation assistance in identifying potential recipients.

## Donor Directed Pooled Fund

Combine your gift with others and designate organizations you'd like to support.

## Community Issue Area Funds

Direct funds to a specific area of interest in perpetuity, without tying to a particular organization.

## Scholarship Fund

Establish criteria to support students of all ages in their educational pursuits.

## Supporting Organization

Create a legal entity affiliated with the Foundation that provides tax advantages while avoiding private foundation requirements.

## Organization Endowment Fund

Allow nonprofits to establish endowment funds managed by the Foundation, reducing administrative burdens while providing steady income.

## Organizational Non-endowed Fund

A flexible fund that helps nonprofits manage their assets with easy access. Organizations can use these funds whenever needed for operations, programs, or other expenses, without long-term restrictions.

### With any Foundation Fund, you can:

- Name your fund to recognize your organization or key donor
- Receive local nonprofit knowledge and connections from the Community Foundation
- Access a Philanthropic Services Advisor to help with all your philanthropic goals
- Access your fund online to check balances and issue grants
- Receive prompt processing of gifts, distributions and expenses



Please contact us for more information on how to choose a fund.

# Gift Options

The Community Foundation provides various ways to make donations and achieve your philanthropic goals. Whether this is done by establishing your own fund during your lifetime, adding to existing funds at the Foundation or through your planned gift, your gift and legacy will live on in the nonprofits you support and the community you choose to strengthen.

## For Individuals and Families

- **Cash**  
Tax-deductible as provided under current law
- **Publicly-traded securities**  
Avoids capital gains tax while allowing maximum tax deduction for full market value
- **Closely-held stock and limited partnership interests**  
Highly appreciated assets, which can create significant tax advantages when donated. These donations allow for a meaningful impact without tapping into liquid assets.
- **Cryptocurrency**  
Avoids capital gains tax; treated as property for tax purposes subject to noncash charitable gift rules
- **Bequest in will**  
A simple way to leave a lasting legacy
- **Life insurance policy**  
Can designate the Community Foundation as owner and/or beneficiary
- **Retirement fund accounts**  
Can donate all or part during lifetime and/or at death
- **Real estate**  
Deductible at full fair market value (up to 30% of adjusted gross income)
- **Tangible personal property**  
Community Foundation sells the property with proceeds funding your charitable goals
- **Charitable remainder trust**  
Provides lifetime income while creating a fund upon death, with immediate tax benefits
- **Charitable lead trust**  
Creates income for the Community Foundation for a specified period before distributing the remaining principal to named beneficiaries, reducing gift and estate taxes
- **Transfer of a private foundation**  
Offers many advantages including lower overhead, staff assistance with charitable goals, and higher tax deduction for future gifts

## For Corporations and Businesses

- **Cash**
- **Securities**
- **Closely-held stock**
- **Limited partnership interests**
- **Real estate**
- **Grain**

### Creating Your Fund in 3 Simple Steps

- 1 **Contact a Philanthropic Services Advisor**
  - Talk through your charitable goals
  - Determine the best fund options for your goals
- 2 **Determine your funding asset(s)**
  - Evaluate lifetime assets versus planned giving assets (or a combination).
- 3 **Start making an impact**
  - Name your fund, begin recommending grants (if applicable), receive regular updates, and watch your philanthropy grow over time

# New Funds

Thank you to our 49 new fundholders made up of nonprofits, individuals, families and businesses that opened a fund in 2024. Let's build a stronger future, together.

Greg Jones opened a donor advised fund, the **A. and G. Jones Fund**.

The Old West End Association & the Agnes Reynolds Jackson Arboretum Committee created an organizational endowment, the **Agnes Reynolds Jackson Arboretum Fund**.

Kiemle-Hankins created a scholarship fund, the **ASM / Kiemle-Hankins Four Way Test Scholarship Fund**.

An organizational endowment, the **Autism Model Community School Foundation**, was created by the Autism Model Community School.

The **Briggs-Truss Legacy Scholarship** was created by Gwendolyn Briggs Allen.

Vince and Sandra DiPofi created the **DiPofi Family Community Fund**, a donor advised fund.

Patrick & Elaine Sheehan created the **DMC Gives Back Fund**, a donor advised fund.

The Friends of Libby Ruppert Steering Committee created a designated fund, the **Dr. Elizabeth "Libby" Ruppert Fund**.

David Effler created the **Effler Fund**, a donor directed pooled fund.

Two designated funds were created by an anonymous donor from a legacy gift.

Candace Harbauer created a field of interest fund, the **Harbauer Foundation**.

Through a legacy gift, James & Judith Brown created the **Jim and Judy Brown Family Donor Advised Growth Fund**.

The **John F. Hayward Family Scholarship** was created by a legacy gift from John F. Hayward, to provide scholarships for Toledo area Catholic high school students.

The Bowling Green High School Class of 1974 created the **Legacy Scholarship at BGHS by the Class of 1974** to provide educational scholarships for graduates of BGHS.

M. Razi Rafeeq and Shahida Rafeeq created a donor advised fund, the **M. Razi and Shahida Rafeeq Fund**.

The **Mark and Lindsay Miller Family Fund**, a donor advised fund, was created by Mark and Lindsay Miller.

The **Miller Family Endowment Fund**, a designated fund, was established by John & Jani Miller.

Dr. Manny Madrazo created the **MMLG Fund**, a donor directed pooled fund.

Dr. Mary Gombash & Mr. James Crosby created a donor directed pooled fund, the **Mr. Bud Crosby and Dr. Mary J. Gombash Charitable Fund**.

The **Paul J. Bishop Family Donor Advised Fund** was created by Letitia Marth.

Randall and Anne Ruch created a donor advised fund, the **Randy and Anne Ruch Foundation**.

Brenda A. Ray created the **Ray Family Law Legacy Fund**, a donor advised fund.

The **Richard & Irene Watkins Legacy Fund**, a designated fund, was created with a legacy gift from Richard Watkins.

Maria Little created the **Richard L. "Rick" Simon Scholarship fund** to provide educational scholarships for graduates of Penta Career Center.

The **Sharon and Jerry Keil Scholarship** fund was created by Sharon Keil to provide post-secondary scholarships.

Matt and Kate Sommerfeld created the **Sommerfeld Family Fund**, a donor advised fund.

The **SSOE Foundation**, a donor advised fund, was created by SSOE.

Star House created the **Star House Organizational Fund** to support their operating, program and/or capital needs.

Mary Wakefield created **The Amu Reas All Grandmother's Urban Wholistics Fund**, a designated fund.

The Arts Commission of Greater Toledo created an organizational endowment, **The Arts Commission Young Artist Endowment Fund**.

The Foundation of the Islamic Center of Greater Toledo, Inc. created **The Foundation of the Islamic Center of Greater Toledo, Inc. Scholarship Fund**.

The **Foundation of the Islamic Center of Greater Toledo, Inc.** created an organization fund.

Mikel Murphy Wollenburg created **The Frank E. Murphy Family Donor Advised Fund**.

**The Paula Mehring Fund**, an organizational endowment fund, was created by The Toledo School for the Arts.

Charles E. Hablitzel created a designated fund, the **Todd Hablitzel Do It Best For BCS** fund.

Toledo GROWs created an organizational endowment, the **Toledo GROWs Mission Endowment**.

Toledo Tomorrow created an organizational endowment, the **Toledo Tomorrow Foundation Fund**.

The Michigan Lacrosse Foundation created the **Triumph Trust** to support their operating, program and/or capital needs.

William Kaplin created a donor advised fund, the **William D. Kaplin Genesis Fund in Memory of Susan B. (Kaplin) Goldstein and Richard L. Kaplin, Jr.**

Wood Lane Residential Services created the **WLRS Ryan Sanner Memorial Fund**, an organizational endowment.

Brent Gottfried created the **B. Gottfried Family Community Fund** of the Wyandot County Community Foundation.

John Stewart Methodist Church & Sue Decker created the **Tammy K. Clifford Scholarship** of the Wyandot County Community Foundation.

Duane & Betty Kokinda opened a donor advised fund, the **Joseph and Eleanor Kokinda Family Fund #2**, a fund of the Ottawa County Community Foundation.

David & Deanne Gulau established a scholarship fund with the Ottawa County Community Foundation, the **Norman and Dott A. Dell Gulau Scholarship Fund**.

The Society of St. Vincent DePaul created the **Port Clinton Food Pantry Operations Expenses Fund**.

Joyce Raymond created the **Raymond Family Fund**, a designated fund of the Ottawa County Community Foundation

Madeline L. Pugh created the **Scott Pugh Scholarship Fund** of the Ottawa County Community Foundation.

Ford Mennel created the **Seneca County Children's Literacy Fund**, a designated fund of the Greater Fostoria Community Foundation.



To see a list of all of our funds, please visit our Giving Hub here.

# Legacy Society

The Legacy Society thanks and recognizes those individuals who have entrusted the Community Foundation with their plan to leave a gift to the community through a bequest, trust, life insurance policy, retirement fund or other vehicle. These forward-thinking donors ensure their values create lasting impact for generations to come.

44 anonymous  
 Karen Ardner  
 Mary J. Baird Family  
 Ashraf F. & Rita W. Banoub  
 Charles J.\* & Kathleen M. Baum  
 Bob Beach & Pam Howell-Beach\*  
 Virginia G. Belt\*  
 Rhoda L. & Roger M. Berkowitz  
 Dr. Isadore Binzer\*  
 Jamie & Ellen Black  
 Robert\* & Nora Blair  
 Charmaine & John Blaylock  
 Ed\* & Doreen\* Bomeli  
 Konni Bostleman  
 Mr.\* & Mrs.\* James L. Brown  
 Rick\* & Ginger Brown  
 Robert B.\* & Sarah S.\* Brown  
 Margie Brune  
 Virginia Bruns\*  
 Deborah A. Budd  
 Lois E. Burgoon\*  
 Roy & Shelli Burgoon  
 Joseph Carron & Sally Marti  
 Christina & Patrick Carson  
 Richard\* & Ann\* Carter  
 Carlos Alberto de Carvalho, M.D.  
 Brian & Denise Caulkins  
 Stephen P. & Elizabeth L. Ciucci  
 Mr. & Mrs. Joseph Conda  
 Dee & Jack Conine  
 Ms. Christine A. Coultrip

Brent & Pamela Cousino  
 Mr. E. Ford Crider\*  
 Eleanor C. Davies\*  
 Deborah A. Dom  
 Barbara\* & Eugene\* Donkel  
 James\* & Susan Dunn  
 George J., Mary A. & Lesley P. Eistetter  
 Dr.\* & Mrs.\* Mohamed El-Shafie  
 Mr.\* & Mrs. Anthony J. Falzone  
 Pam & Jim Fletcher  
 Robert L. Fondessy\*  
 Mr.\* & Mrs.\* Darrell H. Fox  
 Marilyn Fox  
 James W.\* & Linda L. Geary  
 Richard C.\* & Barbara R. Glowacki  
 Charles & Jean Gottfried  
 Michael K. Grames  
 Dave Gulau Family  
 Sharon Hanna Family  
 Kathleen\* & Theodore\* Harbaugh  
 Ms. Carole A. Harrison\*  
 Jeanie Bugert Hayward  
 Rick & Judy Heidebrink  
 Ms. Pamela S. Hershberger  
 Mr.\* & Mrs. Paul F. Heymann  
 Charles K. & Sandra L. Heyneman  
 Edward L. Hoffman  
 Mr. Harold & Mrs. Eileen Hoffman  
 Lynn M. Hoover  
 William R. Hylan  
 Clara E. Moody Jackson\*  
 Kiriyanthan A. Jacob

Thresiamma Jacob  
 John & Kristy Janas  
 Patricia K. Jarzabski  
 Don & Marcia Jess  
 Dennis & Sheila Johnson  
 Jack & Cheryl Johnson  
 Deborah J. Jones  
 Rebecca (Becky) M. Jones  
 Richard H.\* & Joan L.\* Karwhite  
 Richard & Elaine Kern  
 Elmer A. Knight\*  
 Lee N. Koenig\*  
 James & Nancy Lapp  
 Dr. & Mrs. Robert Limbird  
 Joyce W. Linder\*  
 Mr. Allen Lloyd, Sr.\*  
 James R. Longe\*  
 Jean & Kenneth Lovejoy  
 Mark & Sandra Luetke  
 Rita N.A. Mansour  
 Kenneth & Rita Martin  
 Susan L. Martin  
 Mary L. Mazziotti\*  
 Mary L. Mennel  
 Mrs. Karen Merrels  
 Mark & Barbara Metusalem  
 Mr. & Mrs. Donald P. Miller  
 Edna K. Miller\*  
 Gary & Linda Miller  
 Lanny Milligan & Gary Pfothenauer\*  
 Carl B.\* & Gerri Mockensturm  
 Judith D.F. Moore\*

Royse Moran\*  
 John\* & Nancy\* Morrison  
 Roger & Joan Moyer  
 Jane Y. Murrell  
 Alan Newell & Heidi Schultz  
 Mr. & Mrs. Herman\* & Liselotte\* Nordmann  
 Jonathan F. Orser  
 Dorothy R. Otis\*  
 Jeanne Reed\*  
 Charles J.\* & Kathryn J.\* Reynolds  
 William S.\* & Jeanne M.\* Richards  
 Patricia Richardson  
 Newton\* & Beau Rochte  
 Leonard H. Rosenberg\*  
 L. Jean\* & Harold\* Sauer  
 Dwain & Marilyn\* Sayre  
 Robert A. Schaefer\*  
 Eugene & Elizabeth\* Schalk  
 Harold C.\* & Charlotte L.\* Shaffer  
 Ms. Melissa Sharp  
 Craig & Cathy Sheets  
 Lois\* & John\* Shelly  
 Mr. Robert E. Shick, II  
 Dave & Dee Slosser  
 Byrne & Lauren Stapleton  
 Norma J. (Swaigood) Stark\*  
 Sandra Frey Stegman  
 Virginia Secor Stranahan\*  
 Ms. Sandra L. Szymanski  
 Mr. & Mrs.\* Stephen D. Taylor  
 Terrance Teagarden  
 David & Effi Theiss  
 H. Lawrence Thompson\*  
 Tom & Lynnette Titus  
 Leonard J.\* & Dorothy M.\* Tomasik  
 Mark A. and Diane J. Tomasik  
 Margaret Toth\*  
 Woody\* & Judy Trautman  
 Suzy\* & Bob\* Tyner  
 Mr. & Mrs. Arthur Van Rensselaer  
 James Wagner  
 Mr. & Mrs. Richard N. Walen  
 Richard S. Walinski  
 Martha Stephan Weaver\*  
 Dr. & Mrs. David L. Weldy  
 Mr. & Mrs. Byron L. West



The Program Inc.

Thomas & Ellen White  
 Carl & Kristina White  
 Mel & Annette Wicks  
 Ashley Ann Henninger Yoakam  
 Sandy\* & Dick\* Young  
 Marilyn L. Zielinski  
 Saundra M. Zima\*  
 Mark & Gretchen\* Zyndorf

\*deceased



For information about current or deferred giving, or to join our Legacy Society, contact our Philanthropic Services team here.



**\$476.3M**  
Assets

# 2024 A Record Year

As stewards of your contributions, we're proud to report that our managed funds have more than doubled over the past decade. We partner with local, regional and global asset managers to preserve long-term purchasing power while providing sustainable community support. We remain committed to building on this success through disciplined financial management and strategic investment policies.

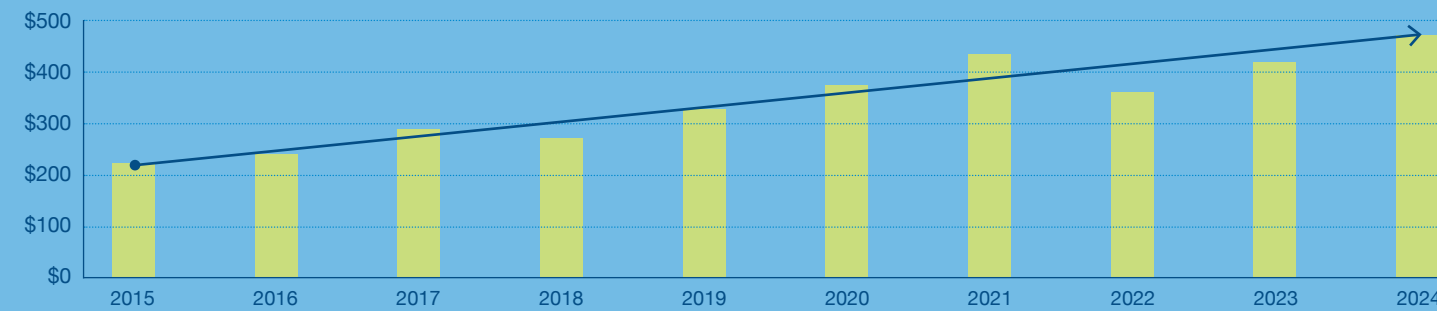


**\$28.7M**  
Record Gifts

### A Strong Financial Picture

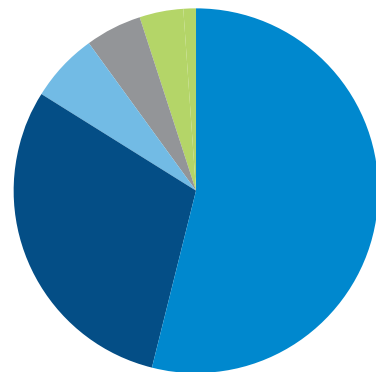
	Cost**	Market
Cash	\$2,186,836	\$2,186,836
Security Investments*	\$267,137,268	\$459,876,041
Net Property and Equipment	\$4,335,457	\$4,335,457
Notes Receivable	\$9,371,212	\$9,371,212
Other Assets	\$563,523	\$563,523
<b>Net Assets</b>	<b>\$283,594,296</b>	<b>\$476,333,069</b>

### Assets Over Time



**\$24.1M**  
Record Grants

### \*Security Investments



Fund	Market
● Vanguard Total Stock Market Index Fund	\$247,974,756
● Vanguard Total Intl Stock Index Fund	\$138,255,385
● DFA Global Fixed Income Fund	\$26,863,619
● Vanguard Total Bond Index Fund	\$24,885,611
● Other	\$21,896,670
<b>Totals</b>	<b>\$459,876,041</b>

\*\*Investments are presented at cost on the audited financial statements.

### CARE Fund - H.O.O.V.E.S

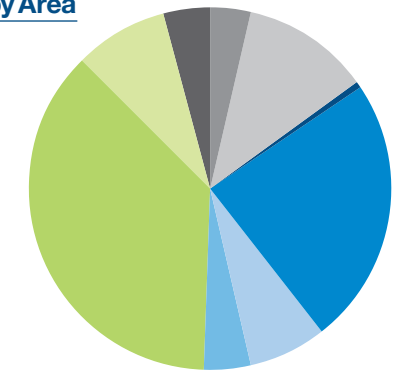


To see our full financial audit, please visit our financials website here.

### 2024 Activity

Gifts Received	\$28,668,107
Investment Income	\$57,274,215
Administrative Fee Income	\$2,751,119
Other Income	\$644,059
<b>Total Support, Revenue &amp; Gains</b>	<b>\$89,337,500</b>
Grants Paid	\$24,126,344
Other Program Expenses	\$4,572,417
Management and General Expenses	\$2,008,401
<b>Total Expenses</b>	<b>\$30,707,162</b>
Increase in Net Assets	\$58,630,338
Net Assets, Beginning of the Year	\$417,702,731
<b>Net Assets, End of the Year</b>	<b>\$476,333,069</b>

### Grants by Area



Focus Area	Awarded
● Animals/Animal Welfare	\$910,051
● Arts & Culture	\$2,740,874
● Economic Development	\$168,270
● Education	\$5,728,693
● Education - Scholarships	\$1,683,476
● Environment/Natural Resources	\$993,304
● Health & Human Services	\$8,945,877
● Religious	\$2,011,185
● Other	\$944,614
<b>Totals</b>	<b>\$24,126,344</b>

300 Madison Avenue  
Suite 1300  
Toledo, OH 43604

The Staff of Greater Toledo Community Foundation



## Follow us

Stay up to date on the work  
we're doing in the community.

